

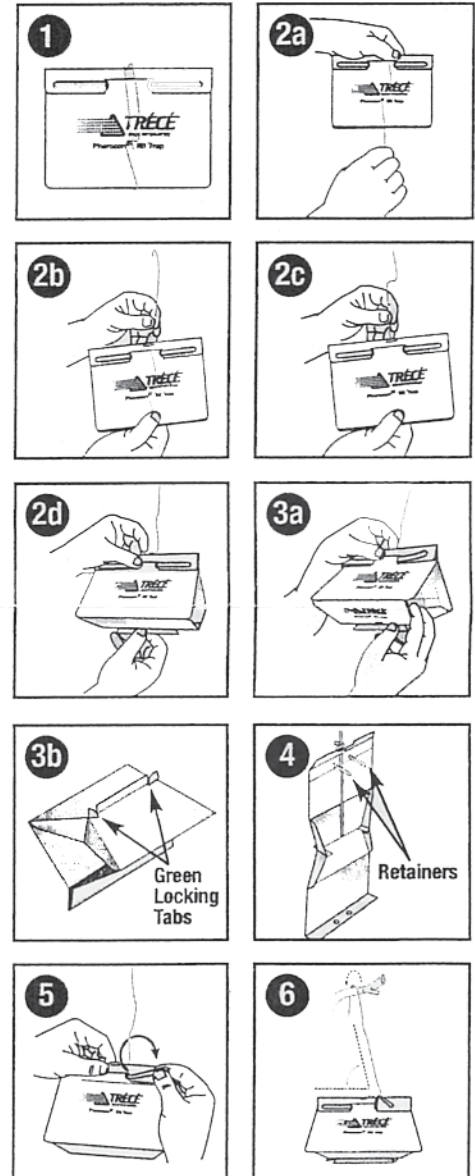
Pherocon® IIB & IIC Assembly Instructions



TRAP ASSEMBLY INSTRUCTIONS

1. Folded trap with rigid wire hangers.
2. See sketch 2a, 2b, 2c, and 2d to unfold rigid wire hanger. Gently pull trap open to crook in wire.
3.
 - a. Grasp the bottom of the trap with thumb and third finger, and push the end flaps up gently with the first and second fingers. Be sure to gently push up and in for best results.
 - b. Once in position, the green locking tabs at the bottom of the trap will need to be turned slightly to lock. Once locked the trap will be easier to handle.
4. To open the trap, unfold (straighten) top two retainers and pull top of trap open and downward.

“Trap opens easily, while hanging, to count insects.”
5. Close trap and wrap one end of retainer around hanger wire at the crook. This will anchor wire and prevent it from slipping.
6. Make sure trap is level by slightly bending angle of the hanger when attached to tree branch.



NOTE: PATENT PENDING

Distributed by:
Great Lakes IPM, Inc.
10220 Church Rd NE
Vestaburg MI 48891

989-268-5693
800-235-0285
FAX: 989-268-5311

www.greatlakesipm.com
E-mail: glipm@greatlakesipm.com

