

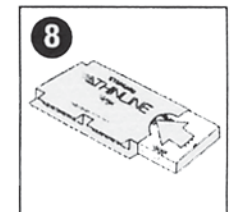
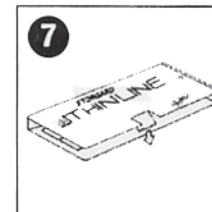
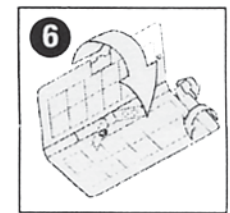
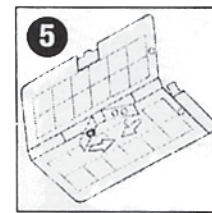
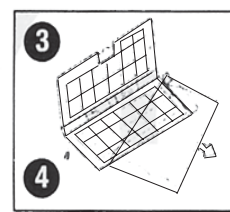
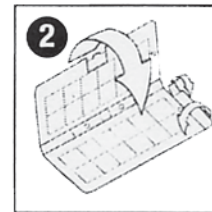
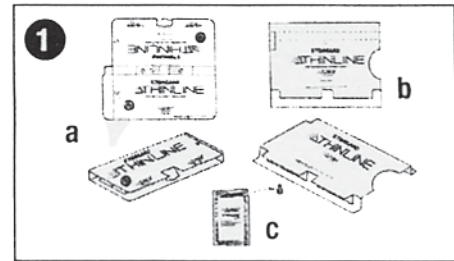
STORGARD[®] THINLINE[™] Insect Monitoring Kit Assembly Instructions



FOR IMM+4, CB AND COMBI

TRAP ASSEMBLY INSTRUCTIONS

1. Remove contents from carton. Each carton includes:
 - a. traps (10)
 - b. wall mounts (5)
 - c. pheromone lures (5)
2. Fold trap at indicated score lines to establish right angles, 90°. This will result in the trap appearing bookshaped.
3. Remove release paper (adhesive covering) to expose both adhesive surfaces of the trap.
4. Place pheromone lure in hole in the back of the trap (described as "Insert Lure") by inserting the small end of the lure(s).
5. Fold tabs with lure inserted into the trap until they come in contact with adhesive surface.
6. Fold at 90° and tuck "dust cover" toward adhesive.
7. Fold trap cover to a closed position and bend center tab at score line to a 45° angle; then insert the tab into the slot on bottom of the trap.
8. Slide assembled trap into shelf mount or wall mount. Or, you may choose to use this trap on any flat surface.

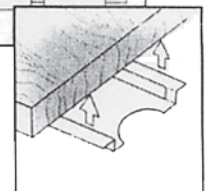
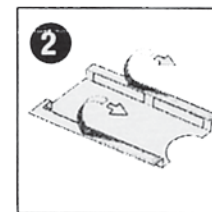
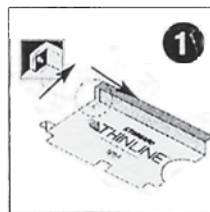


WALL MOUNT ASSEMBLY

1. Fold wall mount as indicated along score lines. Be careful to establish right angles, 90°. Depress the small trap stop-tab labeled "Press after mounting".
2. Remove release paper (adhesive covering) from each side of wall/shelf mount.
3. Attach mount to a clean surface of wall or under shelf as shown.

Please note: Use soap and water or organic solvent to remove all oil and debris from surface before mounting.

Warning: When using as a wall mount, be sure to place the correct side up. Note directions on wall/shelf mount labeled "THIS SIDE UP FOR WALL MOUNT". When using as a shelf mount, turn mount with adhesive sides facing up and orient access slot (half moon) toward outside of shelf.



Distributed by:
Great Lakes IPM, Inc.
10220 Church Rd NE
Vestaburg MI 48891

989-268-5693
800-235-0285
FAX: 989-268-5311

www.greatlakesipm.com
E-mail: glipm@greatlakesipm.com

